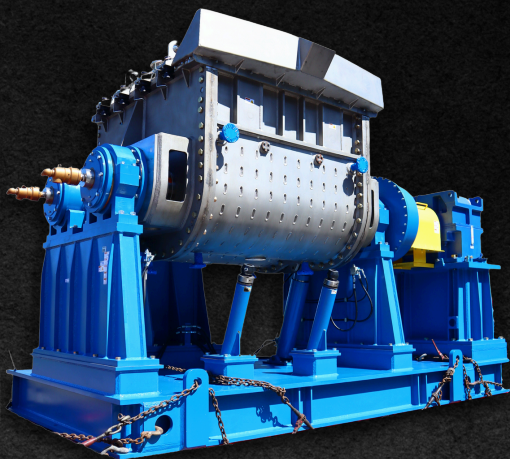


ORBIS

MACHINERY, LLC

DOUBLE ARM MIXER



Orbis Machinery custom-designs and engineers Double Arm Mixers and Mixer Extruders for shearing and kneading high viscosity products.

We offer three varieties of double arm mixers.

- Tilt Discharge
- Bottom Dump
- Auger Discharge

The benefits of each type and help you choose the proper one to best accommodate your process and product characteristics. For high viscosity material mixers, Orbis Machinery, LLC delivers just the right mix of reliability, dependability and flexibility.

The Orbis Machinery mixer extruder incorporates the performance of a double arm mixer with the added convenience of an auger for discharging. While mixing, the auger rotates in reverse to aid in the mixing process. When the mixing cycle is complete, the auger is reversed and materials are conveyed through the discharge barrel (located in the lower section of the bowl) into a discharge die that can feed downstream equipment.

Sigma Blade

The Sigma Blade is a universal style blade and is suitable and versatile for multiple processes such as Confections, Adhesives, Butyl rubber and Sealants.

Masticator Blade

The Masticator Blade is used for dispersion of difficult to mix products such as rubber, plastics or abrasive materials.

Dispersion Blade

The Dispersion Blade provides less shear force and is excellent for mixing fiber reinforced products such as BMC. The blades are available in either 135 or 180-degree spiral.

Naben Blade

The Naben Blade is suitable for mixing applications such as cellulose materials or slurries.

DESIGN OPTIONS

- Materials ranging from Carbon Steel Contact Parts to Exotic Alloys
- Cover Kits including Dust /Vapor Tight or Vacuum Designed Cover
 - Full Vacuum Internal Ratings
- Removable Wear Liners on all Contact Components
 - Turn Key Controls
- Conventional, Dimple, Pipe Coil or Electrically-Heated Jackets
 - Sigma, Dispersion, Masticator or Naben Style Blades
 - Tangential, Overlapping or Naben Blade Designs
 - Vacuum Systems
 - Heating Systems
 - Blade Coring
- High Pressure Displacement Discharge Pumps
 - ASME and TUV certifications
 - VF Drives
 - Hydraulic Drives
 - Mechanical Shaft Seals
- Food & Confection Designs

TYPICAL APPLICATIONS:

- | | |
|--------------|-----------------|
| • Adhesive | • Healthcare |
| • Carbon | • Nutraceutical |
| • Ceramics | • Paper & Pulp |
| • Chemical | • Pigments |
| • Confection | • Rubber |
| • Food | • Sealants |

